

St. Helena's Episcopal Church and School

Boerne, Texas



Our Mission

*We, the Family of St. Helena's,
Empowered by the Holy Spirit,
Welcome all God's Children
to Grow with us in Grace and
Proclaim the Good News of Jesus Christ*



THE *Episcopal* CHURCH



Table of Contents

All pages are hyperlinked

Welcome to St. Helena's Senior Warden	Page 3	Our Life Together Adult Ministries	Page 13
Our Past	Page 4	Our Life Together Seniors Ministry	Page 14
The City of Boerne & Kendall County Texas	Page 5	Our Life Together St. Helena's School	Page 15
Growing Forward A Master Plan for Growth	Page 6	Our Life Together Music Ministry	Page 16
How We Worship	Page 7	Our Life Together Outreach Ministry	Page 17
Membership Growth	Page 8	Finances	Page 18
Our Life Together Living our Mission Statement	Pages 9 -10	Our Next Rector	Page 19
Our Life Together Children's Ministry	Page 11	St. Helena's Videos	Page 20
Our Life Together Youth Ministry	Page 12	St. Helena's Staff	Page 21



Click or scan the QR code to access our website: www.sthelenas.net .



Welcome to St. Helena's

Welcome to St. Helena's Episcopal Church and School! St. Helena's is a dynamic parish located in the heart of the growing community of Boerne, Texas. We are blessed with a rich history and a future replete with boundless opportunities to spread the good news of Jesus Christ. From our founding days in the 1880's as a small wooden church, on the outskirts of the then sleepy village of Boerne, to our current large and beautiful campus in the heart of the historic Hill Country Mile, we are a parish well poised for the future.

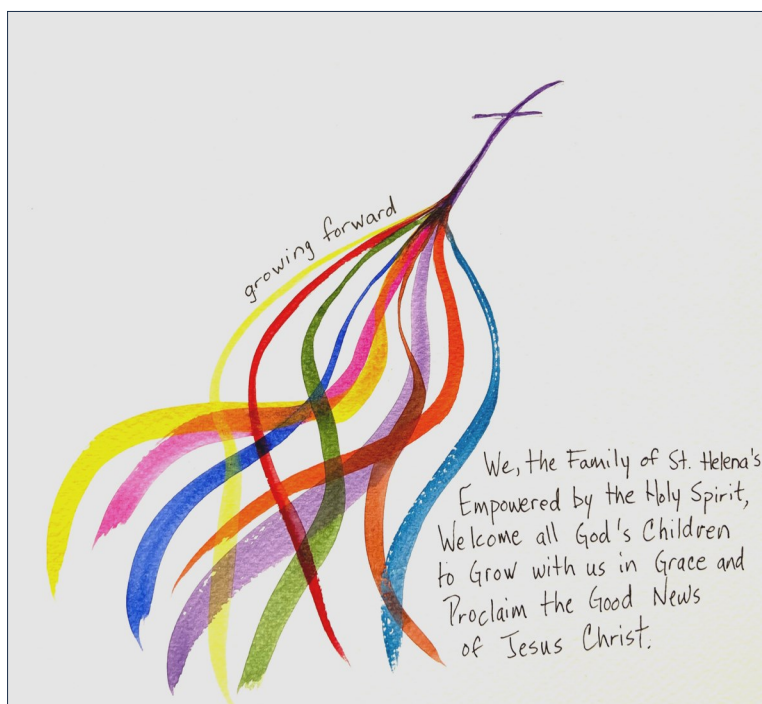
We have chosen the theme of "Growing Forward" as we faithfully walk through this transition and search process. Our goals are to deepen our roots, broaden our branches, bear more fruit of the spirit, and to reach new heights. It is often said that "we are the church" and our congregation is living into that very fact with each and every day. Our summer programs have been rich and full, our Bible studies are active and growing, we are making physical improvements to our campus with an eye toward the future, our Youth Mission trip to the Lakota at Pine Ridge reservation in South Dakota was a huge success, we are the host church for the diocesan-wide Youth Happening, our giving remains strong, and most importantly you can feel and see the Holy Spirit in the DNA of our church family and at work in all we do.

We are blessed and powered by active and strong lay leadership, hardworking and talented staff, strong wardens, a visionary vestry, a well-respected Christian early learning program (school), a well-developed plan for future campus expansion, a dynamic and strong communication system, and all of this is underpinned by a strong financial foundation.

We welcome your interest in our parish and invite you through prayer and consideration to join us as we walk through this exciting phase of our journey.

Peace,

Tommy Mathews – Sr. Warden



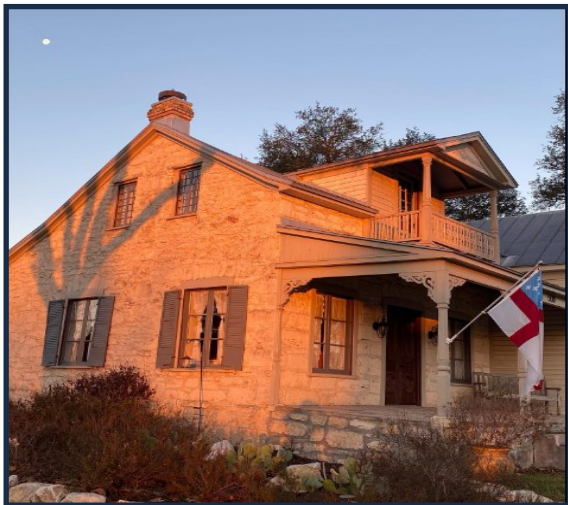
Our Past

In 1848, a group of free-thinking Germans immigrated to Texas and founded Boerne. The city's name honored a German publicist and author, Karl Ludwig Borne, to whom many gave credit for inspiring them to leave Germany for the New World. About 30 years later, the first Episcopal service was held and the cornerstone of the current Historic Sanctuary laid in 1881. During World War II, the Women of St. Helena's carried much of the responsibility and our Parish Hall, located under the Historic Sanctuary, was a community meeting place for many organizations as it was the largest meeting place in Boerne.*

Our proximity to San Antonio brings a surge of growth of families who work in San Antonio and want the benefits of living in a small town. We have also grown. Our largest facility today is Wendler Hall, built in 2006. The Hall is the home of our school and hosts our 9 am worship service, dinner/speaker series, church receptions and community events. A multi-use patio connects Wendler Hall to our Historic Sanctuary.



The Rev. Dr. David G. Read served St. Helena's from 1998-2009 and 2017-2023. During both time periods, we acquired additional property, retired our debt for Wendler Hall and built an outdoor columbarium. In 2020, land across the street from the Historic Sanctuary was purchased along with a home, permanent pole barn and stand alone meeting house. This enabled us to add a Children's Ministry Center and to remodel the home to serve as the church office.

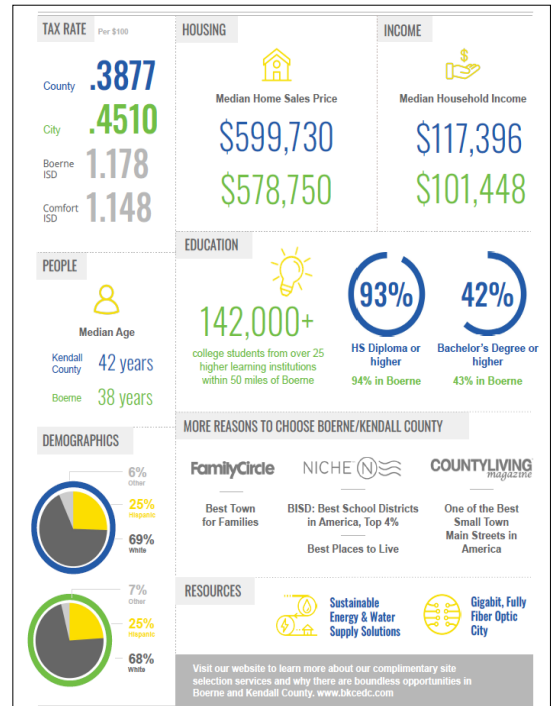
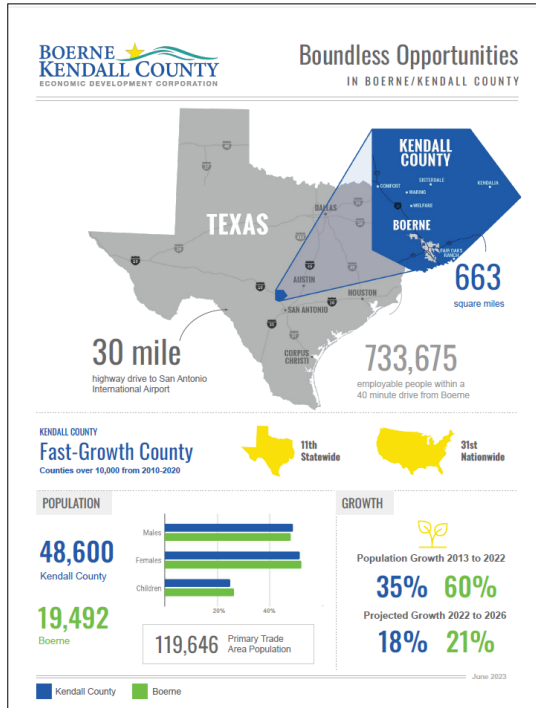


Church Office



The Barn, a multi-use space by the office, is used for church services, cookouts and school events.

The City of Boerne & Kendall County Texas



<https://www.boerne.org/>

Growing Forward - A Master Plan for Growth

The following are excerpts from a sermon The Rev. Dr. David G. Read delivered at the Annual Parish Meeting this year.

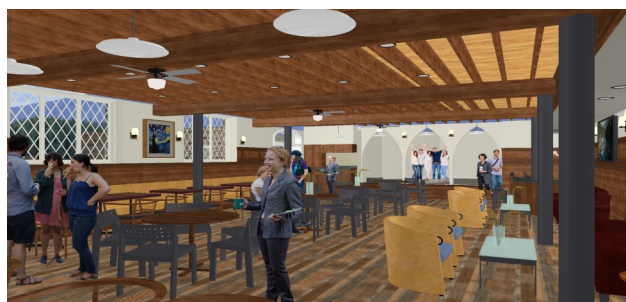
“The great challenge of being a rapidly growing parish is that we need more of everything at the same time. We need more staff to grow and expand our ministries. We need more building space: 2 of our 3 Sunday worship services are consistently over 80% full. The youth house is jam-packed with high schoolers every Wednesday night. We need parking and office space and to remodel our ‘dated Parish Hall.’

I have a dream for St. Helena’s, and it’s a big one. We must – you and me – we must build a new sanctuary. That is the center of that dream and the center of our needs. It must be beautiful. It must lift our hearts and minds toward heaven and be an island of peace in a noisy and insane world. It must highlight and frame the beauty of this sacred space that will always remain on our campus. It must accommodate the continued growth of our congregation and our community and have a minimum of 500 seats. We need other facilities as well: a parish hall, or great room, to match it so our parish family can break bread together, hear God’s word together, and build deeper relationships with one another as we also serve our community. And we need program space for youth ministry, senior fellowship, recovery ministries, children’s ministry, choir rehearsals, our school, and for ministries we have not even dreamed of yet. And we must, must, must, immediately address the challenge of accessibility and bathrooms for this historic building.”

St. Helena’s began Phase 1 of this process in May 2023 with the remodeling our Parish Hall. Phase 1 also includes an extension to Wendler Hall, for which detailed construction drawings are currently being prepared by our architect. As the Historic Sanctuary has no restrooms on the main floor, this extension will include ADA restrooms. Phase 1 also addresses parking needs. Phase 2 addresses additional office space and improving the youth space with the key project being construction of a new larger sanctuary and parish hall. Phase 3 includes acquisition of additional property with the key project being the construction of a Family Life Center



Parish Hall to be completed Aug 2023



Rendering of remodeled Parish Hall



Rendering of bridge from Historic Sanctuary (left) to Wendler Hall

How We Worship

Weekly we offer Sunday services and a Wednesday 10:00 am service. All three services use the BCP and include scripture readings, sermon and Holy Communion. The Wednesday service has no music and an average attendance of 15.

Sunday 7:45 am

Our early morning service uses the traditional style and language of the Episcopal Book of Common Prayer (BCP) Rite One. It includes scripture readings, sermon and Holy Communion, without music. Average 2022 attendance of 33.



Sunday 9:00 am

Our largest service, held in Wendler Hall, is casual and energetic. Contemporary music is provided by guitars, drums, and vocalists. It is largely focused on children, youth, and young families and includes children's and adult sermons as well as scripture readings and Holy Communion. Average 2022 attendance of 122.



Sunday 11:00 am

The second largest services is a traditional service using the BCP Rite Two. Like the 9 am service, this service is very popular with young families with children. The music is provided by pipe organ and adult choir. On special occasions a children's choir performs. Average 2022 attendance of 110.



Membership Growth



Youth Group 2023

Membership & Average Sunday Attendance (ASA)

Year	Membership	ASA
2018	657	324
2019	713	339
2020	737	337
2021	769	294
2022	809	301

2022 - to date

Baptisms	29
Confirmations	50



St. Helena's Young Families Weekend July 2023

Our Life Together

Living our Mission Statement

“We the Family of St. Helena’s...”

Pastoral Care Ministries
Lay Eucharistic Ministry
Fellowship

- Children
 - Youth
 - Young & Restless
 - Young Adults Ministry (YAMs)
 - Young Families
 - Men of St. Helena’s
 - Women of St. Helena’s
 - Free Birds
 - Senior Fellowship
 - Art Haus
 - Ukuladies
 - Monthly lunches
 - Knit and crochet
 - Sponsor guest speakers
 - Clergy
 - Support Staff
 - Vestry
 - Membership
- Parish, Community Events, Outreach
- Seniors Sunday
 - Youth Mission Trip
 - Church & School summer programs for children
 - Blessings in a Backpack
 - Pie Day
 - Rally Day at Camp Capers
 - Blessing of the Animals
 - Fall Wednesday Night Dinner Series
 - A Walk in Bethlehem – Live Nativity
 - Lenten Dinner Series
 - Pancake Supper (Shrove Tuesday)
 - Mother’s Day/Mimosas
 - Transformation House
 - Diocese of South Dakota
 - Local Family Outreach
 - Cursillo & Camp Scholarships
 - Support of St. Nicholas Church Plant
 - Angel Tree
 - Hill Country Daily Bread
 - Kendall County Blood Bank
 - Blessing in a Bag (handout for homeless)



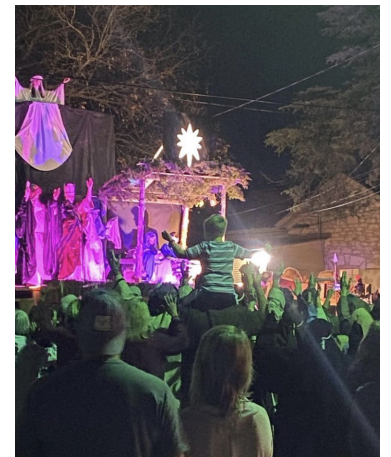
Pie Day 2022



Youth at Rally Day



Bethlehem camel



2022 Walk in Bethlehem



Ordination of The
Reverend Jamie P. George



Blessing of the Pets
2023

Our Life Together

Living our Mission Statement

“Empowered by the Holy Spirit...”

Worship Services: Sundays 7:45,9:00,11:00 a.m.

Wednesday 10:00 a.m.

Funeral Services & Columbarium

Daughters of the King

Music Ministries

- Chancel Choir
- St. Helena’s Singers
- Contemporary Music Team

Altar Guild

Lay Readers

Acolytes

Ushers

“Welcome all God’s Children...”

Newcomers class

Cross-Finder Magazine

St. Nicholas Celebration

Children Christmas Pageant

A Walk in Bethlehem – Live Nativity

Nursery Care

St. Helena’s Episcopal School

Alcoholics Anonymous

Narcotics Anonymous

Other groups who meet on our campus

“To Grow with us in Grace...”

Sunday School Programs for all ages

(Children, Youth, Adult)

Fall Dinner & Speaker Series

Lent Formation Series

New Members Classes

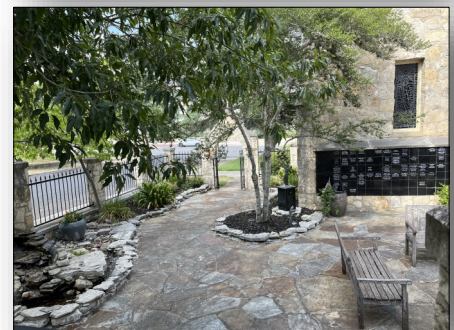
Youth Confirmation

Holy Communion Classes

Men’s 7:45 am Bible Study

Women’s noon and 6 pm Bible Study

Women’s Weekend & Quiet-ish Day Retreats



Columbarium



Altar Guild Christmas Party

Our Life Together - Children's Ministry



Parish Breakfasts



VBS



Acolytes @ 9 and 11



St Helena's School Fieldtrip



St. Helena's Singers



St. Helena's fully embraces children. We have children's sermons at the Sunday 9:00 and 11:00 a.m. services. During the school year, we have Sunday School for all ages. Wednesday after-school programs are for 1st - middle school. And our high school youth groups meet Wednesday evenings. Dawn McLendon is the Youth Minister and Stefanie Nitschke is our Young Families Minister. They both support the children's program. We also have a children's choir, the St. Helena's Singers. For more information, please go to <https://sthelenas.net/serve/>.

Our school is well-respected in the community. It serves pre-K through 5th grade. When people ask, 'Why St. Helena's School?' We respond: 'We focus on the whole child: We are Christ-centered (Mark 12:28-34), Humble in service (Matthew 23:11-12); Instructional excellence (Matthew 5:14-16); Loving one another (John 13:34).'

During the summer, the church runs three children's programs free to the community (Vacation Bible School, Fine Arts Academy and Camp WACKY). Our school also runs three summer STEM camps.

This summer, VBS had 171 children, 35 youth volunteers and 11 adult volunteers.

Fine Arts Academy had 121 children, 13 youth volunteers and 4 adult leaders.

Camp Wacky had 46 children, 10 youth volunteers and 4 adult leaders



Our Life Together - Youth Ministry



Youth interns for Wed
afterschool programs



Greening the church
2022



Acolytes



Youth Group Mission Trip to Wounded Knee, South Dakota
to assist our sister church, Messiah Episcopal Church.

Our Life Together - Adult Ministries



YAMs meet monthly for Bible Study & to do community projects



Men meet weekly for Bible Study & monthly for fellowship. Assist with church projects.



Women meet weekly in Fall and Spring for Bible Study



Empty Nesters meet monthly for food, fun and fellowship



Women's Quiet-ish Day retreat



Young families support each other, meet monthly for food & fun and attend Family Camp at Mustang Island in Texas.

Our Life Together - Seniors Ministry

Our Senior's Ministry has been acknowledged by the Diocese of West Texas as one of the best and a model for other churches. This group has ongoing monthly activities and often sponsors speakers to address topics of interest such as bereavement.



Monthly lunches and outings



The Ukuladies practice at St. Helena's, perform at area events, nursing homes and senior living centers.



Weekly, seniors arrange donated flowers to take to those in need.



The Art Haus Group

A large group of area men & women who gather monthly to express their spirituality through art.



Women meet to make prayer shawls



Our Life Together - St. Helena's Episcopal School

St. Helena's Episcopal School is a private, co-ed school, teaching children ages 18 months through 5th grade. The students develop a strong spiritual and moral character through a faith-centered education. Our classrooms are safe, happy, engaging environments filled with resources that allow students to learn in ways to which they naturally respond.



We maintain low student/teacher ratio, student grouping arrangements are flexible, play and exercise are built into the daily schedule, and opportunities for learning extend to the natural world that surrounds us. Our school was started in 2008 and continues to enrich the lives of the children, their families, St. Helena's Episcopal Church, and our community.

The Mission of St. Helena's Episcopal School is "To shepherd God's children and their families in a community of grace and to share the truth and love of Jesus Christ through developmentally appropriate instruction."



Our Life Together - Music Ministry

St. Helena's is blessed to have three distinct music groups.

The 9:00 am Sunday Service features contemporary music with a group of dedicated song leaders and a band that features guitars, piano, drums and other musical accompaniment.



The 11:00 am Sunday Service organist is Dr. Susan Matteson. The Choir Director, Whit Matteson leads the Chancel Choir. Destiny Lucero leads the children's choir known as St. Helena's Singers.



Chancel Choir



St. Helena's Singers practicing for Sunday

Our Life Together - Outreach Ministry

Community Events

Over 1500 people come annually to be part of A Walk in Bethlehem



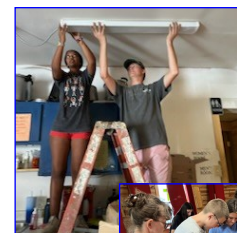
Youth Mission Trip to South Dakota



Blessing of Animals for all the community



Maty's Box
24 hour food for anyone in need



Seniors weekly distribute flowers to shut-ins



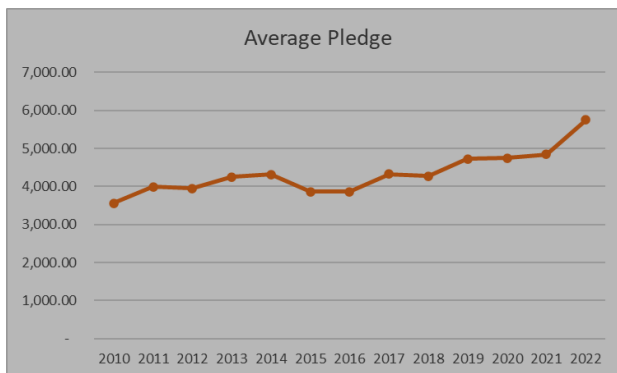
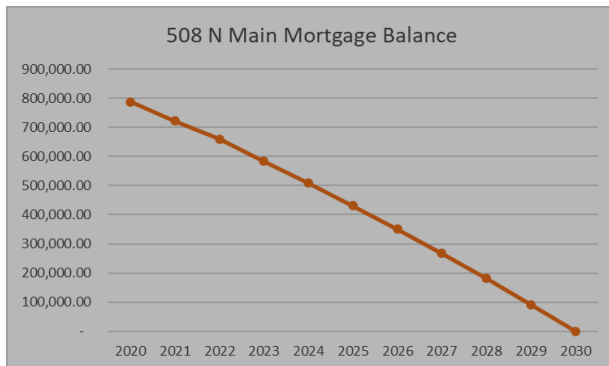
Salvation Army
Angel Tree Project



Finances

We have a debt that remains from the 2020 purchase of 508 N Main (church office, an outdoor permanent pole barn area, and a standalone building for meetings). As we navigated COVID-19 in late 2020 and beyond, this property was a great addition of outdoor space where the congregation could gather safely outside. The standalone meeting building is utilized for regular meeting such as vestry meetings, committee meetings, and ministry group meetings as well as occasional events like small classes or areas for breakout sessions for larger events.

The addition of 508 N Main to our church campus enabled us to add a dedicated Children's Ministry Center for our Children's programs including Sunday School, mid-week programs during the school year, and summer programs. Below you can see how we are reducing the burden of the debt on that purchase. This mortgage is financed with funds from the Wendler Facilities Fund.



Total Outreach 2022

\$256, 113

• Rector's Discretionary Fund	\$5,000
Transformation House	\$5,000
Diocese of South Dakota	\$5,500
Local Family Outreach	\$634
Cursillo Scholarships	\$910
Camp Scholarships	\$1,025
Support of St. Nicholas Church Plant	\$5,000
• Operating Budget Outreach	\$16,987
• Youth Mission to Messiah Church	\$27,997
• Support of the Diocese of West Texas	\$193,080

For 2023 we received 204 signed pledges for \$1,172,891 and an average pledge of \$5,749. We expect to receive \$150,000 from plate donations and \$60,000 in special gifts. Our total budgeted income is \$1,361,108 and our budgeted expenses total \$1,361,108 giving us a balanced budget.

St. Helena's Episcopal Church currently has three endowments totaling a current valuation of \$11,172,789. The largest component of this, \$10,795,900 was left to St. Helena's in 2014 by the estate of Dr. Clifford Wendler, the proceeds of which are used for facilities development, maintenance, and seniors' ministries. The remaining endowments are currently \$130,316 for general purposes and \$246,572 for children and youth ministries."

Our Next Rector

Let's start with "Who is St. Helena's?"

In response to our parish-wide workshop May 20, 2023, we confirmed that we are:

- A rapidly growing healthy congregation that enjoys gathering for events such as Rally Day and Pie Day, welcomes newcomers and sees itself as multigenerational.
- Blessed to have a rich church history, our school, outreach programs, and ministries that reach all ages.
- Excited about our growing presence in the Boerne community. For example, our 'Walk in Bethlehem' two-day Christmas event brings over 1500 people. It is a free gift St. Helena's provides to our larger community that involves about 100 volunteers annually.

What are our opportunities?

- Create more space for services and events, and parking (Note: this is addressed in the Campus Master Plan).
- Involve more members - all ages - in our programs and events.
- Maintain a bridge/connection between the congregations of each of our unique services.
- Harness the existing energy and momentum to find new ways to expand our outreach.
- Manage growth while not forgetting our focus on our ever deepening relationship with God.

What capabilities are we seeking in our next rector? (not prioritized)

- Provide administrative leadership for our growing congregation, our staff and our ministries.
 - ◊ Emphasize the spiritual growth of our church members.
 - * Develop and lead adult formation.
 - * Strong energetic preaching that relates the Gospel to our daily lives.
 - ◊ Equip and involve laity in the planning and leadership of church ministries.
 - ◊ Lead and guide the growth of our school and connect it with our young families ministries.
 - ◊ Provide leadership and support for our school and its staff - be involved, get to know the teachers, children and their parents.
- Be visibly and actively involved in the community beyond the church.
 - ◊ Attend community events.
 - ◊ Learn about the organizations that support and feed the needy in Kendall County.
 - ◊ Develop relationships with leaders of outreach efforts in Kendall County.
 - ◊ Be involved in the Diocese of West Texas and their outreach projects.
- Drive stewardship.
 - ◊ Build relationships with parishioners.
 - ◊ Exercise financial acumen to guide the church and school as well as steer the ongoing capital campaign.
 - ◊ Educate the congregation on what we are doing and why it is important.
- Grow pastoral care to meet the needs of our aging adult population.

St. Helena's Videos

St. Helena's YouTube Streaming 9 am Sunday Service	https://www.youtube.com/@sthelenas/search?query=Sunday%209%20am%20April%
Children's Pageant in Historic Chapel	https://fb.watch/m1h_hP-9-P/
Christmas Eve in Historic Chapel	https://fb.watch/m1i0S-ZYhN/
Bethlehem	https://fb.watch/m1hW5gIN1B/
School children in Halloween costumes at Wednesday 10 am church service	https://fb.watch/m1i5H1VZnh/



St. Helena's Staff

The Rev. John D. Badders, Jr., Interim Rector	rector1@sthelenas.net
The Rev. Jamie P. George, Curate	jamie@sthelenas.net
Tommy Mathews, Senior Warden	seniorwarden1@sthelenas.net
Pam Boutte, Parish Administrator	pam@sthelenas.net
Amy Ryland, Admin Asst. to the Rector	amy@sthelenas.net
Dawn McLendon, Children/Youth Minister	dawn@sthelenas.net
Stefanie Nitschke, Minister Young Families	stefanie@sthelenas.net
Pat Krueger, Senior Fellowship Director	seniors@sthelenas.net
Devvie Asel, Communications	devvie@sthelenas.net
Cayce Mann, Young Adult Minister	cayce@sthelenas.net
Dawn Allen, Assoc Head of Pre-School	dawnallen@sthelenas.net
Anna Kessler, Assoc Head of Elementary	anna@sthelenas.net
Bryce Boddie, Worship Leader	bryce@sthelenas.net
Whit Matteson, Choir Director	choir@sthelenas.net
Dr. Susan Matteson, Organist	choir@sthelenas.net
Destiny Lucero, Children's Choir	choir@sthelenas.net
Linda Antu, Custodian	custodian@sthelenas.net
Bethany Covington, Nursery Director	childcare@sthelenas.net
Zack Tanner, Sexton	sexton@sthelenas.net
Sean McLendon: Sunday Sexton	

